

PART OF N.E. 1/4 SEC. 12, T.7N., R.2E., & S.W. 1/4 SEC. 6, N.W. 1/4 SEC. 7, T.7N., R.3E., S.L.B. & M.  
**SUNRIDGE SUBDIVISION NO. 2**

51

UNIT NO. 2  
 LOTS 17-38  
 IN WEBER COUNTY

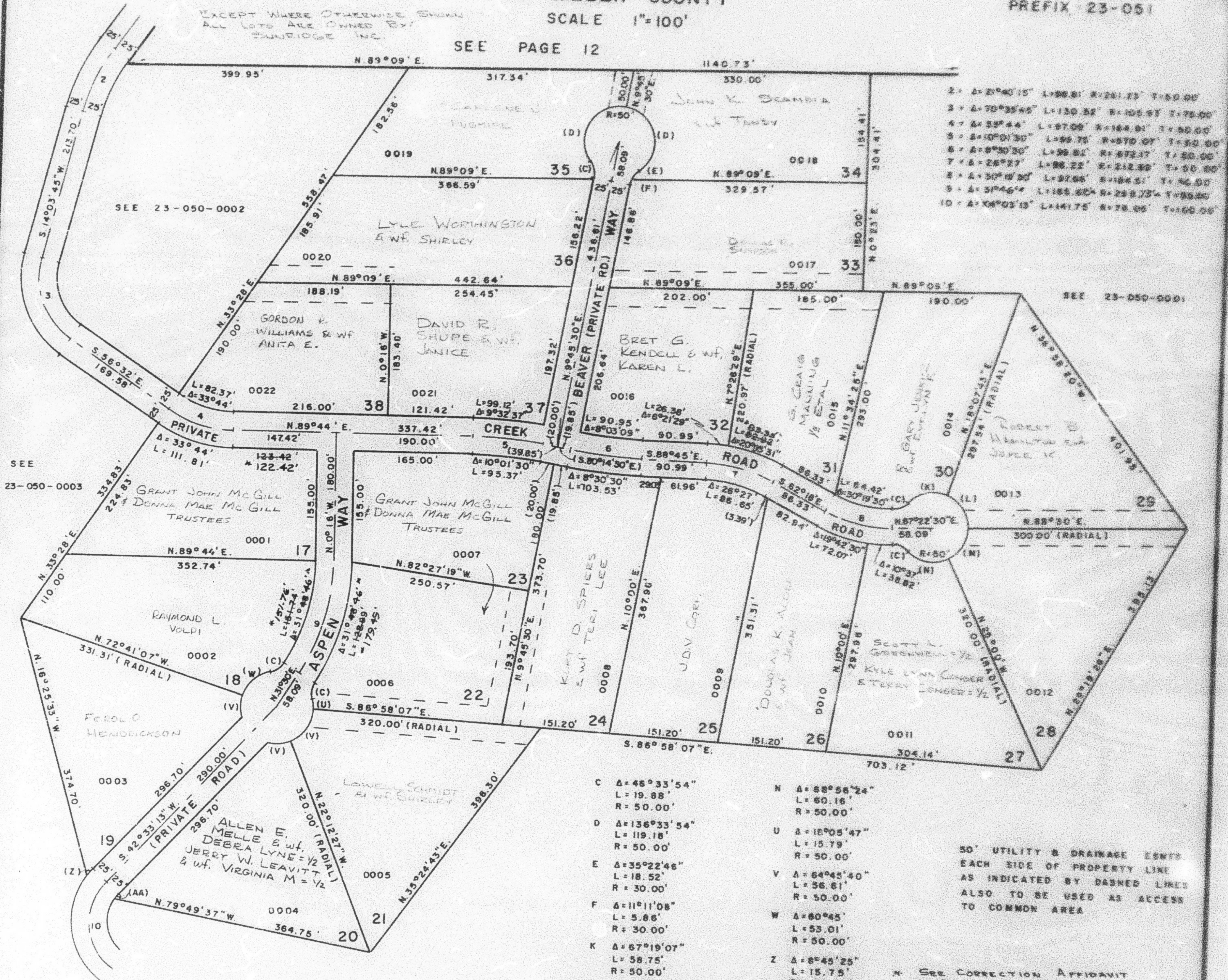
TAXING UNIT 58

PREFIX 23-051

SCALE 1"=100'

SEE PAGE 12

EXCEPT WHERE OTHERWISE SHOWN  
 ALL LOTS ARE OWNED BY  
 SUNRIDGE INC.



2	Δ=21°40'15"	L=98.81'	R=241.23'	T=50.00'
3	Δ=70°35'45"	L=130.52'	R=106.97'	T=75.00'
4	Δ=33°44'	L=97.09'	R=164.91'	T=50.00'
5	Δ=10°01'30"	L=99.76'	R=870.07'	T=50.00'
6	Δ=8°30'30"	L=99.81'	R=872.17'	T=50.00'
7	Δ=28°27'	L=88.22'	R=212.89'	T=50.00'
8	Δ=30°10'50"	L=97.98'	R=184.51'	T=50.00'
9	Δ=31°46'4"	L=185.82'	R=288.73'	T=50.00'
10	Δ=16°03'13"	L=141.75'	R=78.05'	T=100.00'

C	Δ=46°33'54"	L=19.88'	R=50.00'
D	Δ=136°33'54"	L=119.18'	R=50.00'
E	Δ=35°22'46"	L=18.52'	R=30.00'
F	Δ=11°11'08"	L=5.86'	R=30.00'
K	Δ=67°19'07"	L=58.75'	R=50.00'
L	Δ=70°22'17"	L=61.41'	R=50.00'
M	Δ=66°30'	L=58.03'	R=50.00'
N	Δ=68°56'24"	L=60.16'	R=50.00'
U	Δ=18°05'47"	L=15.79'	R=50.00'
V	Δ=64°45'40"	L=36.61'	R=50.00'
W	Δ=80°45'	L=53.01'	R=50.00'
Z	Δ=8°45'25"	L=15.75'	R=103.05'
AA	Δ=14°18'02"	L=13.24'	R=53.05'

50' UTILITY & DRAINAGE EASMTS  
 EACH SIDE OF PROPERTY LINE  
 AS INDICATED BY DASHED LINES  
 ALSO TO BE USED AS ACCESS  
 TO COMMON AREA

\* SEE CORRECTION AFFIDAVIT  
 IN BOOK 1062, PAGE 227

FOR COMPLETE ENG. DATA  
 SEE ORIG. DEED PLAT IN  
 BOOK 17, PAGE 29